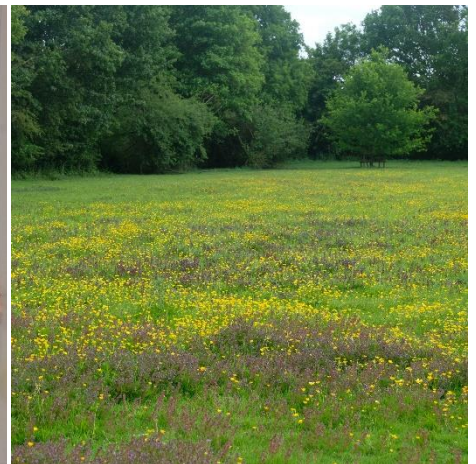
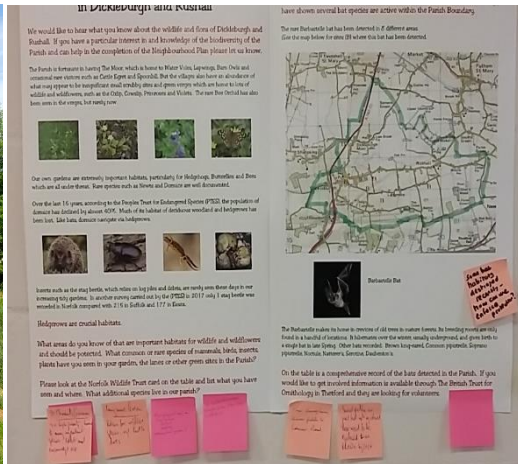
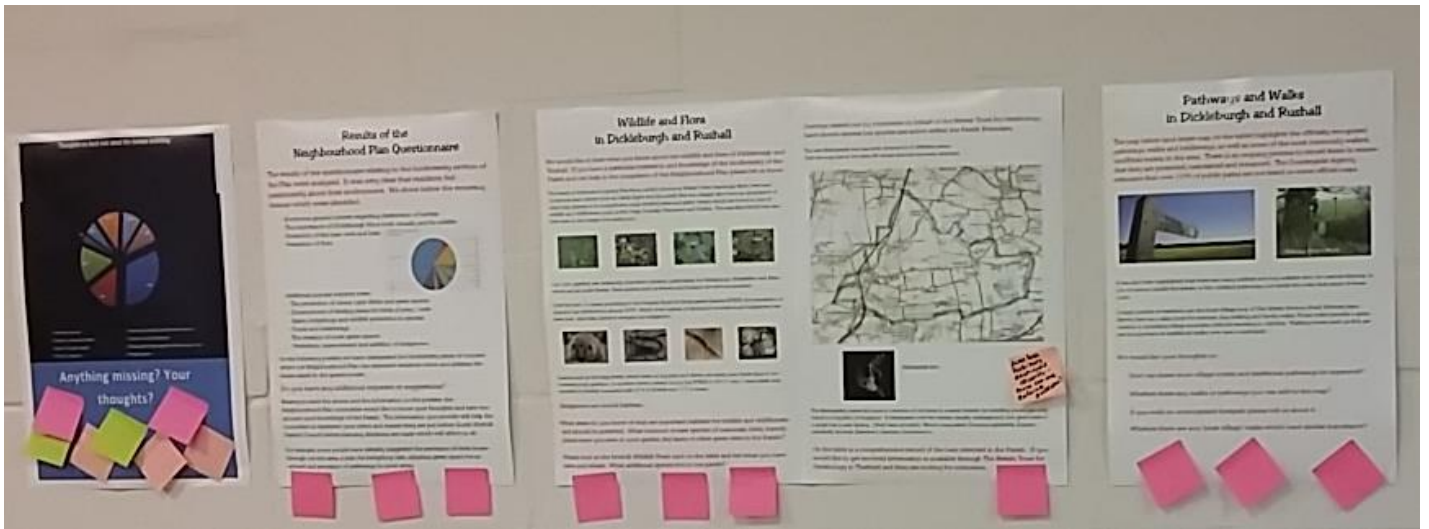


## APPENDIX Q ENVIRONMENT ECOLOGICAL NET GAIN



## DICKLEBURGH AND RUSHALL NEIGHBOURHOOD PLAN REGULATION 14 PRE-SUBMISSION

**There are a number of strategies that could be used to increase the biodiversity and ecology of an area.**

This could include creating a range of locally appropriate habitats and the inclusion of design features that encourage and enhance biodiversity, including those that enable animals, especially species in decline to move between habitats unhindered. Greater weight will be given to proposals that would result in a significant net ecological gain,<sup>1</sup> or which helped to support the beeline for pollinators or other key green infrastructure set out in the Greater Norwich Green Infrastructure Strategy.<sup>2</sup>



A survey could consist of a plant inventory, and plant variety count, on the land to be built upon. This would be included in the plans with mitigation proposals.



---

<sup>1</sup> CIEEM Environmental Net Gain Briefing Paper (April 2021)

<sup>2</sup> Greater Norwich Development Partnership GREEN INFRASTRUCTURE STRATEGY A proposed vision for connecting people, places and nature