
APPENDIX W ENVIRONMENT BIODIVERSITY DATA SETS W1



DICKLEBURGH AND RUSHALL NEIGHBOURHOOD PLAN
REGULATION 14 PRE-SUBMISSION

Introduction

The biodiversity team undertook a wide range of studies, embracing national and international developments and areas of debate, in addition to the examination of existing legislation and the intentions, plans and projects of local and national bodies which might impact upon the Parish of Dickleburgh & Rushall.

A broad examination of ancient maps was made and comparisons made with the contemporary landscape following extensive surveys of the naturally occurring features within the Parish boundary.

The '*Have Your Say*' open days and questionnaires highlighted the importance placed on wildlife by residents and we followed up on the anecdotal reference to certain features by capturing actual data from old, recent and new wildlife surveys. Surveys were conducted by local enthusiasts and volunteers, conservationists, and the team itself.

Bat surveys were completed and continue using the Parish's own Bat monitor, working in conjunction with the British Trust for Ornithology in Thetford.

It is intended that this survey work will be ongoing. A permanent Biodiversity Body is planned, and this will dovetail with the existing Commons Committee working with local and national wildlife bodies. A website is planned so that all existing and new data, surveys and so on are made permanently available to the public.

This document illustrates some of the survey data conducted, features extracts from certain publications and makes reference to a cross-section of the study materials used in the preparation of the Plan.

Biodiversity data sets

The Biodiversity Data Appendix is divided into several separate sections, as follows:

Section1 Wildlife Reports & Data 1

- Bats

Extract from a bat survey 2019

Specimen of one of the Parish Bat Surveys September 2019

2019's bat survey sites and results and extracts from new mammal/insect surveys

Sonogram of Pipistrelle Bats on Dickleburgh Moor Sept 2020

Maps

Habitat and Land Use Summary from NBIS May 2019

Section 2 Wildlife Reports & Data 2

- General Wildlife

Bird List for Dickleburgh Moor from 2018

Dickleburgh & Rushall Species sighted 2017/2018

Survey of moths -Dickleburgh 2017-2019

General Wildlife Survey - Langmere & Dickleburgh 2019

Dickleburgh's Wild Birds 2000-2001

Dickleburgh Species Results from NBIS

Section 3 Wildlife Reports & Data 3

- *Specific Sites*

County Wildlife Sites in the Parish: General Overview of each site

County Wildlife Site Survey 2019 for St.Clement's Common

County Wildlife Site Survey 2018 for St.Clement's Common

Section 4:

Hedges, Trees, Verges & Habitat

Hedgerow Surveys for the Parish, sample summary

Specimen of a typical completed Hedgerow Survey within the Parish

Norfolk County Council Verge Cutting Plans

Verges Conservation & Verge Management

Norfolk County Council Biodiversity Action plan for Hedgerows

Map illustrating interlinking corridors of hedgerows.

Ecologist's notes on habitat loss etc.

Local Government Association Workshop - Environmental Net Gain

Regulations

Hedgerow Regulations & Definitions

Relevant Publications

Tree Planting & Air Quality Academic Paper

Miscellaneous

Quiet Lane Proposal Document for the Parish

Dark Skies - links to Various articles and papers relating to health and light pollution

Trees - notes on Tree Preservation Orders for South Norfolk County Council

References to other wildlife data held in archive

Miscellaneous Additional Research

Research: Dickleburgh and Rushall NP Biodiversity – insect decline

Section 1 - Wildlife Reports & Data

Wildlife Reports & Data 1

Extract from a bat survey undertaken with the B.T.O. at various locations during 2019 showing the species of bat at each location.

Recorded Bat Sites in Dickleburgh and Rushall Parish

species:	Grid Reference:
Barbastelle:	TM1942082206
	TM1785782398
	TM1687882270
	TM1784782386
	TM1795181654
	TM1781182374
	TM1803581660
	TM1802581680
	TM8189218449
	TM1758791966
	TM1787181906
	TM1694083540
	TM1732482398
Brown long-eared bat:	TM1785782398
	TM1687882270
	TM1737582297
	TM2014383374
	TM1784782386
	TM1795181654
	TM1843581710
	TM1694083540
	TM1654082060
	TM1631082630

Common pipistrelle: TM1942082206
TM1785782398
TM1780582350
TM1687882270
TM1737582297
TM2020583248
TM2014383374
TM2025183380
TM1784782386
TM1795181654
TM1781182374
TM1843581710
TM1803581660
TM1802581680
TM1792781296
TM1844981892
TM1781782362
TM1758781966
TM1787181906
TM1781982358
TM1694083540
TM1696082290
TM1654082060
TM1631082630
TM1722082880
TM1770082580
TM1732482398

Daubenton's TM1942082206
TM1785782398

TM1737582297
TM2025183380
TM1784782386
TM1795181654
TM1802581680
TM1844981892
TM1694083540
TM1631082630

Natterer's

TM1785782398
TM1687882270
TM1784782386
TM1802581680
TM1694082540
TM1696082290
TM1631082630
TM1770082580

Noctule:

TM1942082206
TM1780582350
TM2014383374
TM1781182374
TM1631082630

Serotine:

TM1687882270
TM1781982358
TM2014383374
TM1781982358
TM1696082290

Soprano pipistrelle:

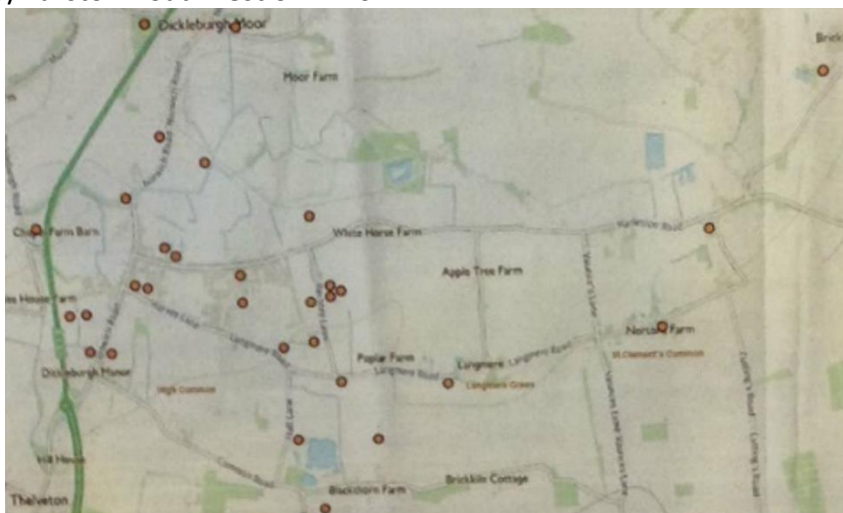
TM1942082206

TM1785782398
TM1780582350
TM1687882270
TM1737582297
TM2020583248
TM2014383374
TM2025183380
TM1784782386
TM1795181654
TM1781182374
TM1803581660
TM1802581680
TM1844981892
TM1781782362
TM1758781966
TM1787181906
TM1781982358
TM1694083540
TM1654082060
TM1631082630
TM1722082880
TM1770082580

Approximate recording sites. See map for location numbers.

(These location descriptions equate approximately to the previous grid references which are the exact locations logged by the volunteers who recorded the information)

- 1 Woodland near Dickleburgh Road/Burston Road west of A140
- 2 Harvey Lane near The Street
- 3 Back of Catchpole Walk
- 4 Brick Kiln Cottages
- 5 Martin Everett's Field
- 6 Hedgerow Langmere Road
- 7 Rectory Road near green space
- 8 Harvey Lane behind school
- 9 Norton's Farm
- 10 Rectory Farm, Rectory Lane
- 11 Hedgerow entrance to Martin Everett's field bottom of Rectory Lane
- 12 Harvey Lane entrance to field in copse of trees near Hall Lane Junction
- 13 Hedgerow Common Road near the airfield
- 14 Hedgerow by pathway North off Rectory Road opposite Rectory Lane junction
- 15 Woodland on Moor Road west of A140
- 16 Dickleburgh Moor



Extract from a typical bat survey undertaken with the B.T.O. at a location in Dickleburgh village overlooking Dickleburgh Moor in September 2019

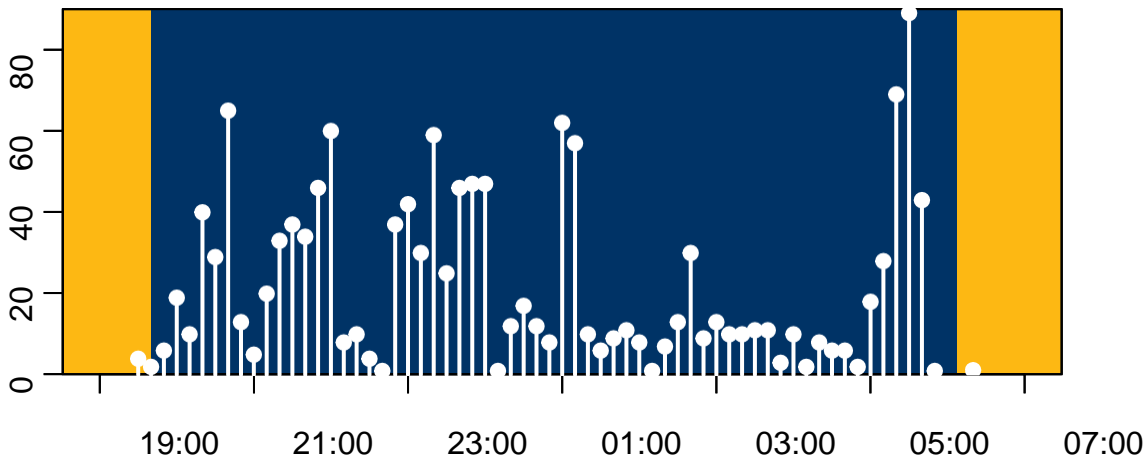
Visit information.

Below and on the following pages you can see a summary of the bats detected on each recording night. This includes a graph for each night showing how the number of bat passes (all species) varied through the night. Dawn and dusk are indicated by the division between sun-yellow and midnight-blue areas.

Recording night: 02 Sep

Species	Total number of passes
Barbastelle	137
Brown long-eared bat	3
Common pipistrelle	750
Daubenton's bat	2
Leisler's bat	6
Leisler's bat or Noctule	7
Myotis species	24
Natterer's bat	6
Noctule	1
Pipistrelle species	394
Serotine	30

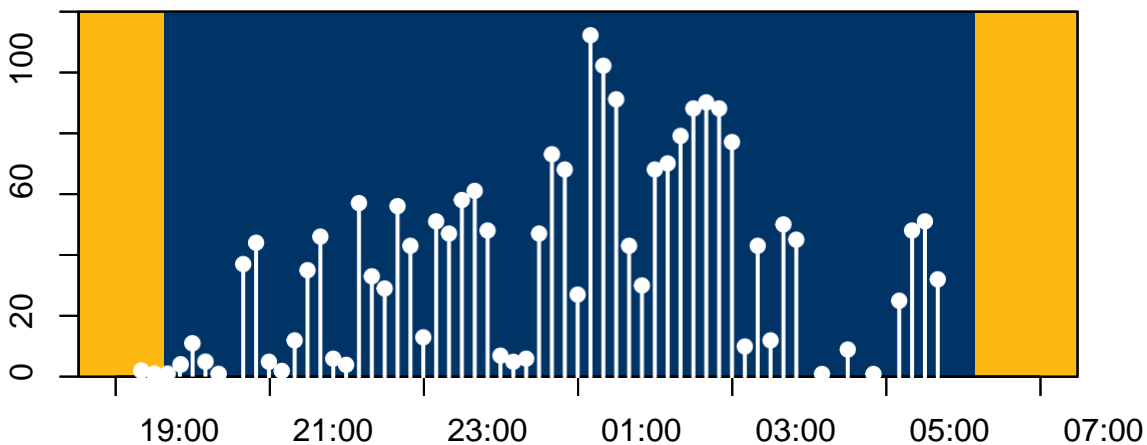
Number of bat passes per 10 minutes through the night:



Recording night: 03 Sep

Species	Total number of passes
Barbastelle	257
Brown long-eared bat	15
Common pipistrelle	1441
Daubenton's bat	1
Leisler's bat	3
Leisler's bat or Noctule	5
Myotis species	33
Natterer's bat	5
Noctule	1
Pipistrelle species	382
Serotine	44
Soprano pipistrelle	23

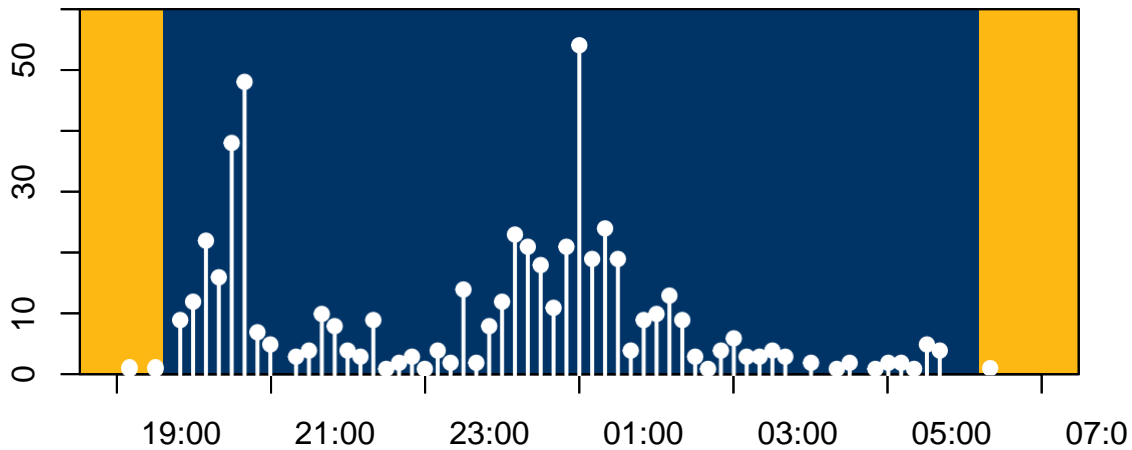
Number of bat passes per 10 minutes through the night:



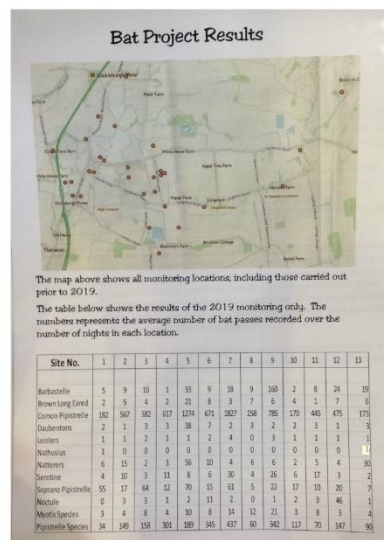
Recording night: 04 Sep

Species	Total number of passes
Barbastelle	87
Common pipistrelle	166
Daubenton's bat	2
Leisler's bat or Noctule	3
Myotis species	7
Natterer's bat	6
Noctule	2
Pipistrelle species	263
Serotine	5
Soprano pipistrelle	11

Number of bat passes per 10 minutes through the night:



A poster from 'Have Your Say Day 2' illustrating 2019's bat survey sites and results



Note: Bat Monitoring has taken place in the Parish in conjunction with the British Trust for Ornithology in Thetford and data is held for a range of locations over a number of years. In 2019 the Parish purchased its own monitoring equipment and structured monitoring has taken place.

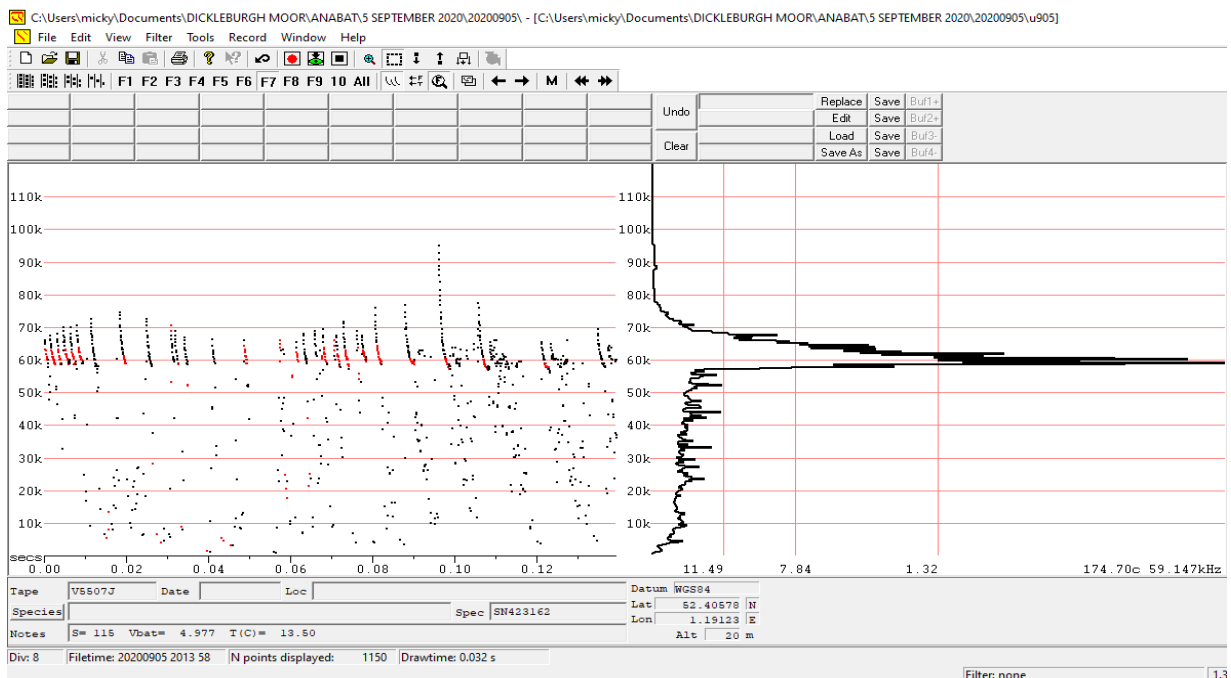
Recent improvements in recording techniques means that it is now possible to identify other species such as certain mammals, crickets and particular types of moth and with future improvements, it will be possible to widen the scope of these surveys.

An extract from a survey of a couple of sites in the Parish is shown below.

Date	location	SMALL TERRESTRIAL MAMMALS		
		Brown rat	Common shrew	Eurasian pygmy shrew
26-Jul	TM1780882375	0	0	0
27-Jul	TM1780882375	0	0	0
28-Jul	TM1780882375	0	0	0
29-Jul	TM1780882375	1	0	0
30-Jul	TM1780882375	1	0	0
20-Aug	TM1662482718	71	0	1
21-Aug	TM1662482718	39	0	0
22-Aug	TM1662482718	53	1	0
23-Aug	TM1662482718	3	0	0
		168	1	1

Date	location	BUSH-CRICKETS			
		Dark bush-cricket	Long-winged bush-cricket	Roesel's bush-cricket	Speckled bush-cricket
26-Jul	TM1780882375	2309	3	4	610
27-Jul	TM1780882375	1998	6	2	703
28-Jul	TM1780882375	3229	3	0	2657
29-Jul	TM1780882375	1656	30	2	3747
30-Jul	TM1780882375	172	0	0	563
20-Aug	TM1662482718	4364	28	194	3860
21-Aug	TM1662482718	4347	466	261	4004
22-Aug	TM1662482718	4533	225	82	4370
23-Aug	TM1662482718	456	1	1	494
		23064	487	546	21008

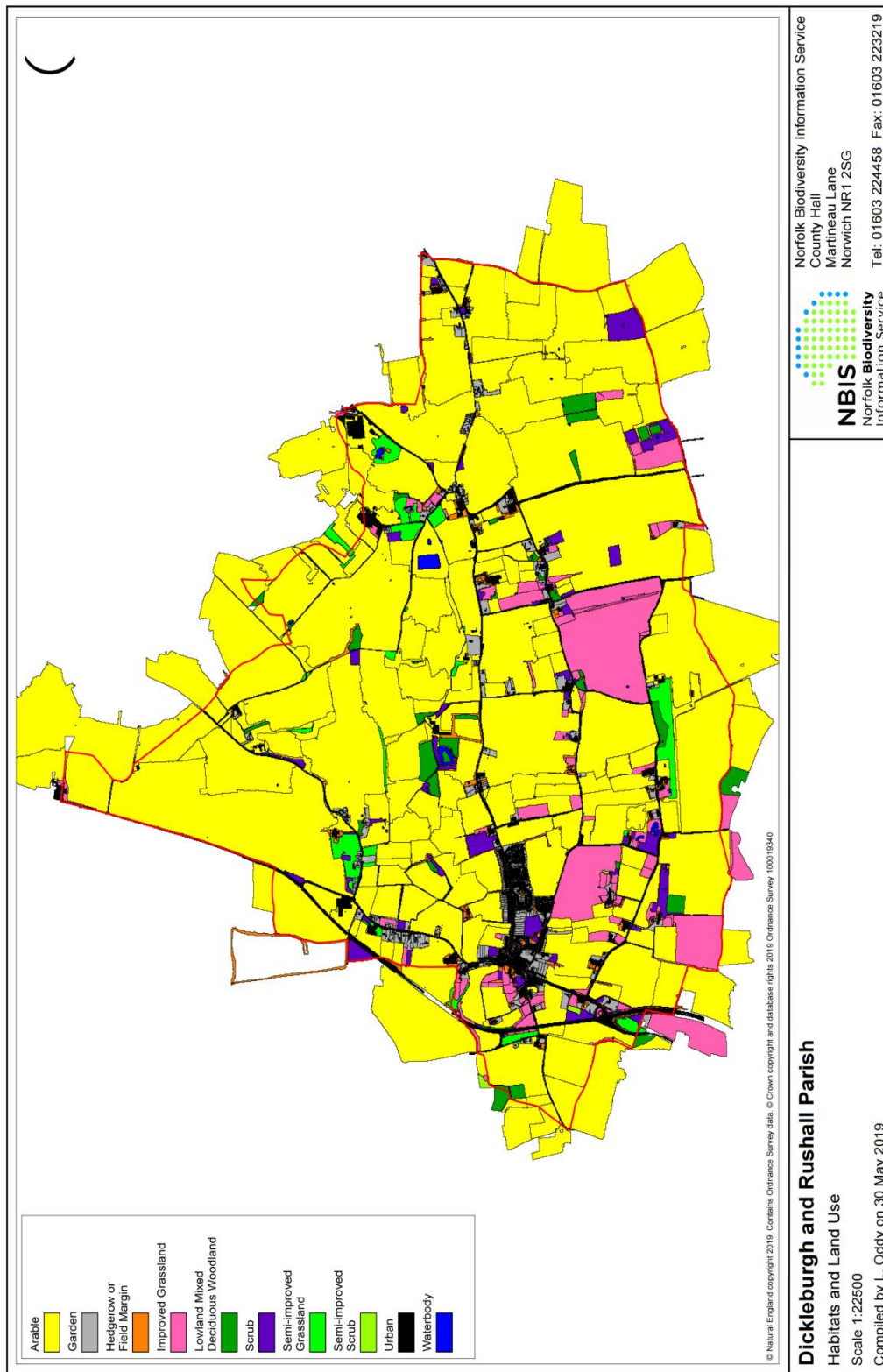
Sonogram of Soprano Pipistrelle Bats on Dickleburgh Moor Sept 2020



This is a specimen from a monitoring programme in September 2020 and similar records are held relating to other bat species such as Serotine, Noctule, Common Pipistrelle & Others

Map

Habitat and Land Use Summary from NBIS May 2019



For further information on bat populations in the parish of Dicleburgh and Rushall contact Mrs J. Patching via the Dicleburgh and Rushall Parish Council.